



Bond Securcom Inc.



Introduction & Company Overview

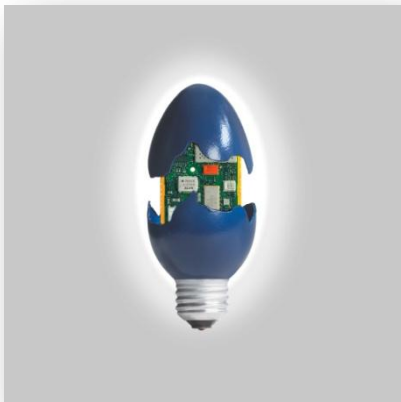


Bond Securcom Inc. - Innovation, Integration, Excellence

Company

In business for thirty years, Bond Securcom has provided innovative security and communications products and services to a wide range of commercial, industrial, multi-unit residential and not-for-profit organizations in need of effective solutions to ever-changing security needs.

In a marketplace dominated by large, multi-national corporations offering “one-size-fits-all” solutions driven by their own need for “scale”, Bond Securcom has strived to maintain a personalized level of service and design approach for each of its clients, bringing the latest in technology and methods to meet the specific demands of each individual situation.



Today, the company still promotes and practices the same high attention to detail and commitment to service that has enabled it to succeed for over three decades. Bond has avoided the typical “growth for growth’s sake” approach, and continues to see itself as a boutique supplier of security and communications services to those organizations requiring real security and real value, while recognizing the changing perspectives of modern society and its growing concerns for such issues as the balance of a legitimate desire for privacy and the need for increased protection in a progressively more dangerous world.

Throughout its long history and extensive experience, Bond Securcom has learned to apply the most modern approaches to current security challenges, and commits to each of its clients the same care and consideration it would wish for its own employees and families. The company’s experience has not been limited to a single market segment such as commercial buildings, but has traversed many markets. This has required the business to keep abreast of current trends and developments in the areas of facility design, security systems integration, guarding, hardware, security practices and processes, telecommunications, and virtually every other aspect of security and communications systems as they apply to today’s modern buildings.

Bond’s proposed solution for each customer is based solely upon our expert evaluation of the customer’s particular situation.

SECURITY COMPONENTS

Bond Securcom is able to plan for and meet virtually any security contingency by bringing many technologies and skill sets to bear on a client's security needs:

- ✓ Access control systems
- ✓ CCTV systems
- ✓ Emergency Communications systems
- ✓ Badging and visitor control solutions
- ✓ Intrusion systems
- ✓ Guard services
- ✓ Monitoring services
- ✓ Locksmith services
- ✓ Locking hardware and systems
- ✓ Electronic security systems and guard services integration
- ✓ Facility design considerations
- ✓ Operating practices and procedures design and evaluation

APPROACH

As with all plans, good security design begins with the end in mind. This is especially important in planning security for high-profile buildings because potentially conflicting objectives require careful analysis and design *from the very beginning*, to ensure the optimum balance between the need for security and the need to create welcoming, friendly spaces where individuals and families can live, work, and play.

To add to an already complex situation, the demands on facility owners and managers are becoming more onerous, as litigation for real and perceived lapses becomes more commonplace. From simple (yet potentially expensive) incidents such as "slip and falls" to more serious threats that can materialize without warning, the potential for losses





due to court actions (and settlements) is growing every year. Facilities are increasingly being held accountable to provide a safe and secure environment, whatever the source of the threat, and as the costs associated with managing such threats increase, they become a more important budgeting consideration.

At the same time, increased emphasis is being placed upon "accessibility" and ease of use. While the awareness of security considerations is higher today, there is no evidence of increased tolerance to security measures that are perceived to intrude upon the normal, day-to-day activities of building occupants and visitors. Measures undertaken to provide enhanced protection are expected to have deterrent effect, and yet to be subtle and unobtrusive at the same time!

Any comprehensive security plan must address the facility's exposure to, and plans for dealing with, the entire spectrum of security considerations, including such diverse topics as:

- ✓ slip and fall incidents (especially important where seniors congregate and live)
- ✓ medical emergencies (including provision of first aid and CPR, and use of automated external defibrillator devices),
- ✓ parking control, including vandalism, theft of autos and theft from auto
- ✓ assault and theft – violent crime is on the increase in many areas of the GTA
- ✓ bomb threats – unfortunately a growing concern for any high profile building
- ✓ airborne particulate contamination – both accidental and intended
- ✓ other acts of terrorism

Such considerations need to be a part of the facility design from the very earliest stages, in order to achieve the necessary balance between the need for security and the desire for friendly, accessible spaces. Making the creation of suitable security plans even more difficult is the increasing requirement that site security measures actually *enhance* the service culture of the facility. Bond Securcom management have been involved in this type of planning and design for many years, and have the benefit of firsthand experience in creating security solutions which incorporate the total spectrum of security and communications tools and techniques to achieve this balance.

Bond Securcom takes a systemic approach to security, blending subtle elements of building and environmental design with high technology solutions to achieve the desired result. While some challenges or situations may require a "high profile" approach, others may benefit most from a low-key, almost invisible "influence" on the environment to provide the necessary effect. Governing our recommendations at each step is a commitment to provide a solution customized to meet the specific needs and objectives of our client.

QUALITY

While virtually every security company promises quality, Bond's commitment to quality and value is complete. Bond utilizes the highest standards and quality materials in the installation of your systems to ensure reliability and longevity:

- ✓ High quality cables provide improved reliability and image quality;
- ✓ All cables are neatly routed, dressed, and labeled to make future additions and service easier and less expensive.
- ✓ Soldered and covered cable connections provide improved reliability and reduce the possibility for grounds and other faults and failures;
- ✓ Relays and other components are installed in sockets and properly fastened mechanically, and are not stuck on with glue or tape. This ensures easy serviceability and reliability in the long run;
- ✓ Oversized, individually-fused power supplies for cameras increase operating life and reduce the chance of failure;
- ✓ High quality card readers provide extended read ranges and offer long life - most with lifetime warranty;
- ✓ "Sealtight" pipe & connections used on all outdoor equipment protects against water damage.



Bond uses only standard, high quality components, for increased reliability and expansion capability.

VALUE

In a very price-sensitive market, Bond recognizes the importance of value and the value of quality. We provide all extra equipment that may be required during a project at the same original price structure as originally quoted, and offer a range of maintenance and service packages covering one to three years, to allow you to tailor your level of service support to your specific needs, while controlling your costs. Bond continually monitors the marketplace to keep abreast of the latest competitive offerings and prices, yet we will not always select the lowest price, especially if it jeopardizes our commitment to quality, or to future expansion or compatibility.

PORTFOLIO

Bond has designed and supplied security and emergency communications solutions to a wide variety of commercial, corporate, retail, institutional, and industrial customer applications, from new construction sites to projects where the preservation of historically significant architecture and artifacts was a critical concern.



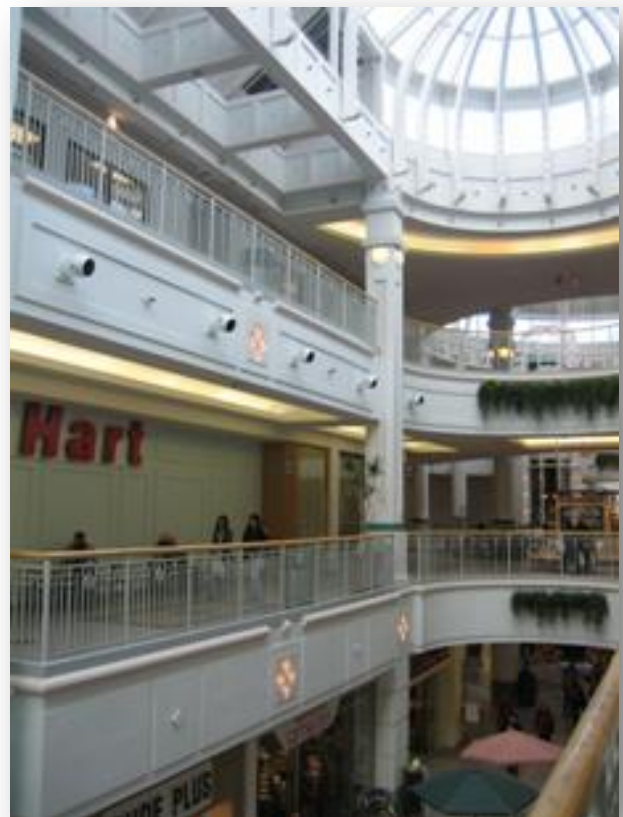
Ritz Carlton

THE RITZ-CARLTON TORONTO

The Simcoe-Wellington Hotel and Residences tower is a 53-story luxury hotel and condominium residence in downtown Toronto. The \$300 million, 700,000 sq. ft. facility features a five-star hotel with 267 rooms and 135 condominium residences in a stately, elegant tower. The facility is protected by the very latest in intrusion, access control, CCTV, and emergency communications systems, all provided by Bond Securcom.

HAMILTON CITY CENTRE

Located in Downtown Hamilton, the Hamilton City Centre is Hamilton's premiere retail venue. Recently renovated and upgraded, the mall is home to retail stores, commercial office space and government offices. Bond has installed an extensive access control and CCTV system in the mall. Panasonic cameras provide video surveillance of all of the common areas, while card readers control access to the office areas and elevators after regular business hours.



Hamilton City Centre



One King West

ONE KING WEST

Built on the base of the historic head office of the Dominion Bank of Canada, and with some 540 suites of mixed condo/apartment use, this building presented unique challenges, as the protection of the heritage of the site and the protection of the residents and guests conflicts with the need for an inviting and easily accessible venue for hotel guests. Bond recently updated and expanded the access control and video systems, providing enhanced protection to the building and its occupants and guests.



Times Group Corporate Centre

TIMES GROUP CORPORATE CENTRE

Sitting on over an acre of land is the Times Group Corporate Centre. Encompassing two commercial buildings and a combination of above grade and below grade parking, the Corporate Centre in Markham is home to several prestigious law firms and the offices of the HSBC. Bond Securcom is installing a CCTV system that will contain 50 cameras employing the latest megapixel technology, to provide detailed surveillance of the entire complex.



Shangri-La

SHANGRI-LA

Located at University and Richmond in downtown Toronto, this 65-storey tower will offer over 200 luxury hotel accommodations and some 370 residences and suites, including two penthouses. Among the amenities are a pool and hot tub, spa, and fitness centre. Bond is providing a complete security solution with access control, video, and emergency intercoms.

TRUMP TOWER

At 60 stories and over 900 feet tall, the Trump Tower will provide 261 luxury hotel accommodations and 118 condominium residences. Bond is providing access control, video, and emergency intercoms for this exceptional project at Bay and Adelaide, which will offer a two-storey spa, five-star dining, and high-tech business centre. The high-tech security components for access control, video, and emergency intercoms are being provided by Bond Securcom.



Trump Tower